

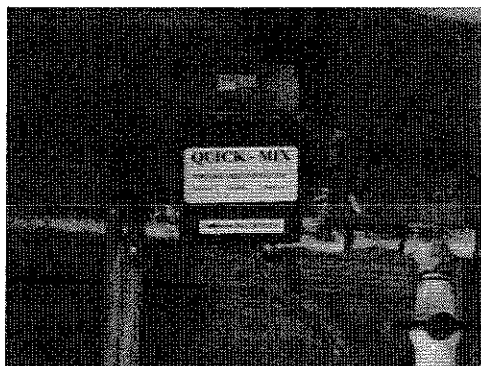
X. INSTRUCTIONS FOR CLEANING YOUR LINES BETWEEN FLOCKS

The Sterilex® Ultra-Kleen Shock Treatment is sold in a set containing:

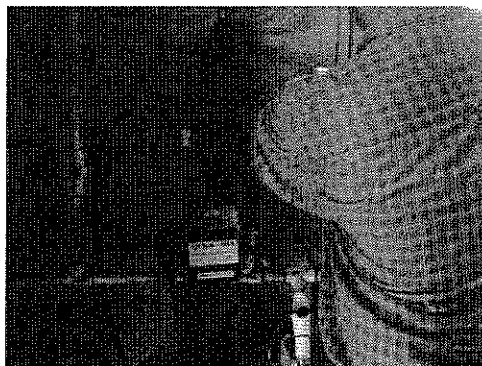
3. Sterilex® Ultra-Kleen Solution 1
4. Sterilex® Ultra-Kleen Solution 2

*****NOTE - THESE INSTRUCTIONS APPLY TO THOSE FARMS THAT HAVE A FLUSH SYSTEM INSTALLED ON THEIR HOUSES.**

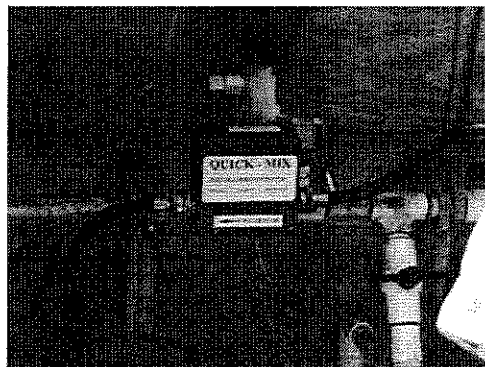
1. Locate your current medicator and attach the Whaleco medicator in its place. This medicator can be attached on your existing plumbing.



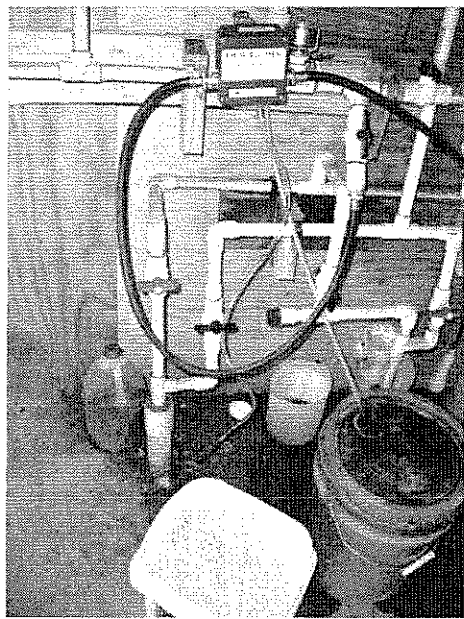
2. Disconnect the input and output hoses from your current medicator and attach to the Whaleco medicator. Notice the arrow on the Whaleco medicator that indicates the flow of water and make sure your water lines are not reversed.



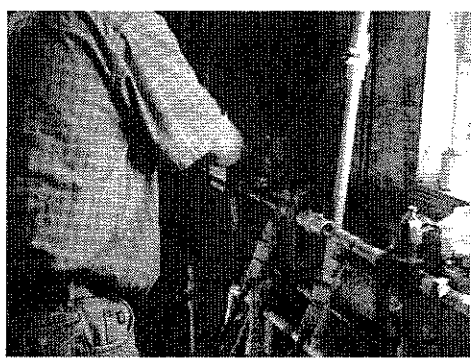
3. When complete, your setup should look like the picture to the right



- 4a. If you are using a single line Whaleco Medicator, then mix equal amounts of Sterilex® Ultra-Kleen Solution 1 and Sterilex® Ultra-Kleen Activator Solution into a 5 gallon bucket (for example 2 gallons of each solution). Then place the siphon line into the bucket containing these two products.
- 4b. If you are using a double line Whaleco Medicator, then place one line into the Sterilex® Ultra-Kleen Solution 1 and the other line into the Sterilex® Ultra-Kleen Activator Solution. This medicator will introduce equal amounts of the product into your water line.

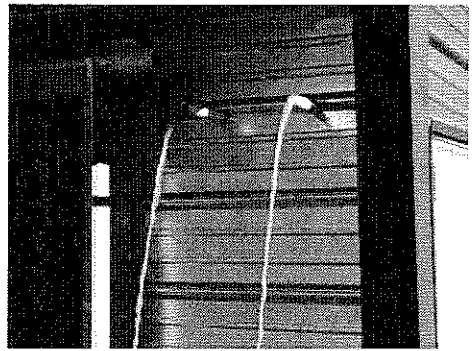


- 5. Place your incoming water supply line on bypass to ensure that your medicator is activated where your water flow will siphon the Sterilex® Cleaner into your water line. At this time, all of your waterers should be partially lowered and regulators should be turned off in the house.



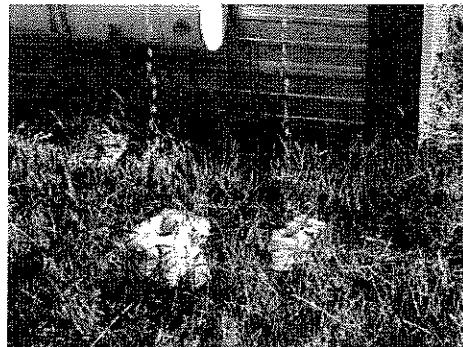
***NOTE - IT IS RECOMMENDED THAT YOU ONLY CLEAN ONE HALF OF YOUR HOUSE AT A TIME.

- 6. Turn on your supply water and allow the water to flow through your drinker and out to the back of your house. You may notice discolored water coming out. Pay close attention until you see a soap like foam begin to appear for the exiting water (See step number 7).



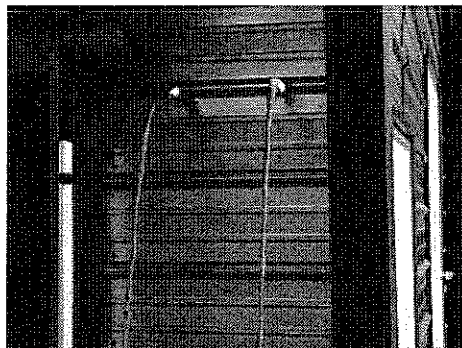
7. When you notice the foam or bubbles on the ground, cut off your regulators (line by line). Then repeat step number six for the other side of the house. When both sides of the house are complete move to the next house and start at step number 1.

After you have applied the cleaner to all houses, remove the Whaleco medicator and attach your plumbing back to its original state and safely store the Sterilex® product.



LET THE CLEANER REMAIN IN THE LINE OVERNIGHT

8. Let the cleaner sit in your line overnight. The next day you will need to flush your lines with fresh water. Again, only focus on half of the house at a time (flushing all of your lines at once will reduce your water pressure and you will NOT adequately flush the contaminants outside). You may notice highly discolored water and an extreme amount of bubbles.



9. Flush your line until the water turns as clear as the incoming water and you no longer notice ANY foam or bubbles in your water. It may be necessary to place a clean bucket underneath the stream of water to ensure that bubbles are no longer present. Repeat steps 8 and 9 with all of your houses



Depending upon water conditions, it may be necessary to run an acid in your water lines to remove hard scale (iron, manganese, iron, and magnesium). This product may remove soft scale but it is intended only to remove biofilms and kill microorganisms. Contact you manager, field technician, or Intec America Corporation for these instructions.

**DO NOT USE THIS PRODUCT WHEN YOU HAVE BIRDS!
ONLY USE THIS PRODUCT BETWEEN FLOCKS!!!**